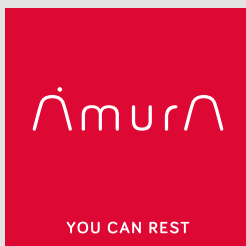
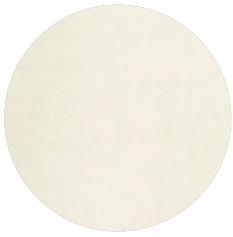


**Tessuto** / Fabric / Tissu

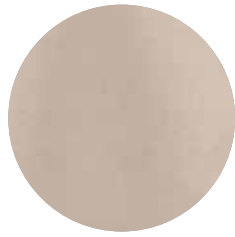
**NOBILIS**



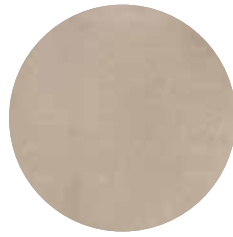
# NOBILIS



01



02



03



04



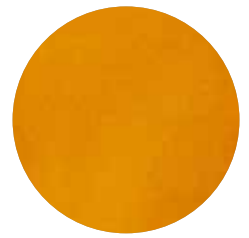
05



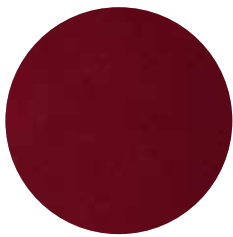
06



07



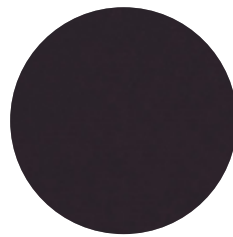
08



09



10



11



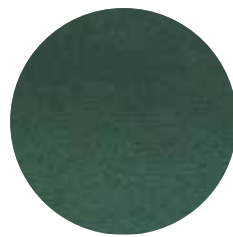
12



13



14



15



16



17



18



19



20

# NOBILIS



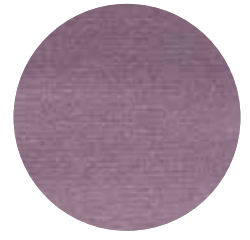
21



22



23



24



25



26



27



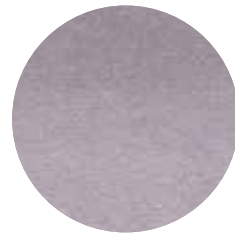
29



30



33



35



37



38



40

**NOBILIS**

**Composizione / Composition:** 100%CO

**Tintura / Dyeing / Teinture:** coloranti reattivi / reactive dyes / colorants réactifs

**Tessitura / Weaving / Tissage:** Velluto / velvet / velours

**Peso / Weight / Poids:** 620 gr/ml

**Abrasione / Abrasion:** >65.000 cycles (UNI EN ISO 12947-2)

**Pilling:** 5 cycles (UNI EN ISO 12945-2)

**Solidità del colore alla luce / Fastness to light / Resistance à la lumière:** 6 (UNI EN ISO 105-B02)

